

# Subsea Visuals

High-performance subsea imaging, lighting, and laser systems  
for deep-ocean operations.



**imenco**

FUTURE TECHNOLOGIES  
[future-technologies.no](http://future-technologies.no)

This electronic version contains useful links to product pages. Click on the contents below to take you to a product section in the brochure. Click on any product name to take you to the product web page

Our History	3
SD Cameras	4
SD Ring Light Cameras	4
SD Zoom Cameras	5
SD Moving Head Cameras	5
SD Low Light Monochrome Cameras	5
HD - SDI Cameras	6
HD - SDI Ring Light Cameras	6
HD - SDI Zoom Cameras	6
HD - SDI Moving Head Cameras	7
HD - SDI Low Light Monochrome Cameras	7
4K Cameras	7
IP Cameras	8
IP Ring Light Cameras	8
IP Zoom Cameras	9
IP Low Light Monochrome Cameras	9
IP 4K Cameras	9
Electric Actuators	10
Subsea Lighting 24Vdc	12
Subsea Lighting 110Vac	13
Lasers	13
Multiplexers	14
Interfacing - Ethernet	14
Interfacing - Power	14



Imenco was established in 1979 as an engineering company and was for the first 20 years engaged in a variety of subsea projects. The Imenco Future Technologies teams in the UK, Norway, USA, and now Brazil provides smart solutions to the ocean industries, specialising in electronics engineering supported by the mechanical engineering and hydraulics departments.

The core technologies of the business are Through Water Communications & Positioning systems, Camera and Lighting solutions for Subsea applications, complimented by the award winning Marine topside CCTV systems, AI solutions, Environmental Monitoring, Leak Detection as well as now Subsea Sensors and Connectors providing comprehensive full turnkey solutions to the oceans industries. We have locations world wide. Please reach out to your nearest office using the contact details below.

### UK & Global:

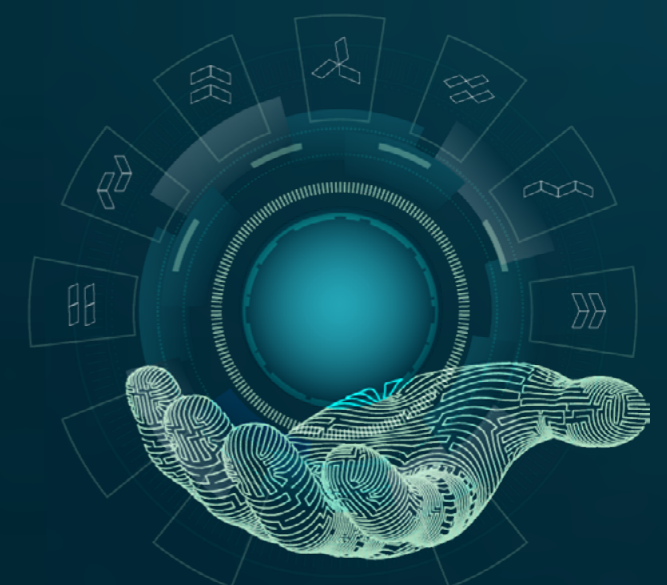
[SEcamera.sales.uk@imenco.com](mailto:SEcamera.sales.uk@imenco.com)

### Norway & Europe

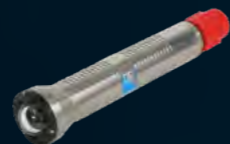
[SEcamera.sales.eu@imenco.com](mailto:SEcamera.sales.eu@imenco.com)

### USA

[SEcamera.sales.us@imenco.com](mailto:SEcamera.sales.us@imenco.com)



## SD Cameras



### OE14 - 110 / 111

- 73° AOV in water
- 480 TVL/PH Resolution
- 12-24V DC, 250mA
- Depth:
  - 3000msw
  - 4500msw

### Greytip

- 64° AOV
- 750 TVL
- 24V DC, 5W
- Depth: 4000msw

### IM14-126 / 127 SD

- 96° AOV (Dome Port)
- 72.6° AOV (Flat Port)
- 800TVL Resolution
- 24V DC, 4W



### Goblin SD

- 100°, 113°, 145° AOV
- 800 TVL Resolution
- 24V DC, 4W
- Depth: 6000msw

### OE15-108 / 109

- 73° AOV
- 400 TVL/PH Resolution
- 12 - 24 VDC, 110mA (max)
- Depth: 3000 msw
- Fixed Lens (Monochrome)

## SD Ring Light Cameras



### Silvertip

- 73° AOV
- Fixed Lens
- 750 TVL
- 4000msw Rated
- LED output 500 Lumen

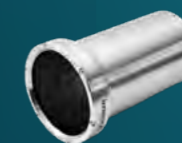
### Whitetip SD

- 49° AOV
- 10 x Optical Zoom
- 550 TVL
- 4000msw Rated
- Inbuilt LED 600 Lumen

### OE14 -376 / 377

- 36° AOV
- Fixed Lens
- 480 TVL/PH
- 3000msw Rated
- 99 lux at 1 metre

## SD Zoom Cameras



### Whitetip / Blacktip SD

- 49° AOV
- 10 x Optical Zoom
- 550 TVL Resolution
- 4000msw Rated

### Hammerhead II

- 71° AOV
- 30 x Optical Zoom
- 670 TVL Resolution
- 4500msw Rated

### IM14-390 / 391

- 84° AOV°
- 10 x Optical Zoom
- 550 TVL Resolution
- 4500msw Rated

## SD Moving Head Cameras



### OE14-212 / 213

- 43.7° AOV in water
- Rotate 360°, Tilt 205°
- 10 x Optical Zoom
- 625 TVL
- Depth: 4500msw

### OE14-222 / 223

- 41.5° AOV in water
- Pan 176°, Tilt 205°
- 10 x Optical Zoom
- 625 TVL
- Depth: 4500msw

### Lizard Shark SD

- 45° AOV in water
- Pan 350°, Tilt 270°
- 10 x Optical Zoom
- 460 TVL
- Integrated LED's (dimnable)

## Low Light Monochrome SD Camera



### IM15-100 / 101G

- 94.8° AOV
- Sensitivity: 0.0009 Lux (100mV video)
- 570 TVL

### Night Shark LL

- 105° AOV
- Sensitivity: 0.0001 Lux
- 560 TVL

### IM13-136 / 137 SD

- PAL or NTSC
- 95° AOV
- Sensitivity: 76 microlux (300TVL limit)
- 540 TVL

## HD- SDI Cameras



### IM14-526 HD

- 113° AOV (Dome Port)
- HD colour video
- 1080p@30fps Resolution
- 6000msw Rated

### Goblin HD

- 100°, 113°, 142° AOV (Flat Port Optional)
- HD colour video
- 1080p@30fps Resolution
- 6000msw Rated

## HD-SDI Moving Head Cameras



### OE14-522 HD

- 55° AOV
- Pan 190°, Tilt 200 °
- 10 x Optical Zoom
- Integrated Lighting Option

### Lizard HD

- 49° AOV
- Pan 350°, Tilt 270 °
- 10 x Optical Zoom
- Integrated Lights 1000 Lumens (dimnable)

## HD- SDI Ring Light Camera



### Whitetip HD

- 49° AOV
- 10 x Optical Zoom
- 1080p@60fps Resolution
- Whitetip - Internal lights 1000 Lumen

## HD-SDI Low Light Monochrome Camera



### IM13-136 / 137 HD-SDI

- 95° AOV
- 25fps or 30fps
- Sensitivity: 76 microlux (300TVL limit)
- 800 TVL

## HD-SDI Zoom Cameras



### Whitetip / Blacktip

- 49° AOV
- 10 x Optical Zoom
- 1080p@60fps Resolution
- 4000msw Rated

### Spinner III

- 71° AOV
- 30 x Optical Zoom
- 1080p@60fps Resolution
- 4500msw Rated

### IM14-506

- 80° AOV
- 30 x Optical Zoom
- 1080p@60fps Resolution
- Depth:
  - 4500msw Rated
  - 6000msw Option

### IM14-600 Megalodon

- 4K QFHD 6GHDSI
- 60° AOV
- 20 x Optical Zoom
- 2160p@30fps Resolution
- Fibre Connection

## IP Cameras



### OE17-110

- 75° AOV (In Water)
- 48:1 Digital Zoom
- 1080p@30fps Resolution
- Latency 225ms
- 24V & PoE

### OE17-101

- 96° AOV (Dome Port)
- 72.6° AOV (Flat Port)
- 1080p@30fps Resolution
- Latency 270ms
- 24V or PoE

### Goblin Shark IP

- 100°, 113° & 142° AOV (Dome Port)
- 76°, 87° & 110° AOV (Flat Port)
- 1080p@30fps Resolution
- Latency 170ms
- 24V or PoE

## IP Ring Light Cameras



### Whitetip IP

- 49° AOV
- 10 x Optical Zoom
- Latency 170ms
- Lights 600 Lumen

### Goblin L Shark IP

- 100°, 122° & 142° AOV
- Inbuilt LEDs 300 Lumen
- Latency 170ms
- Inbuilt LEDs 300 Lumen

## IP Zoom Cameras



### Whitetip / Blacktip IP

- 49° AOV
- 10 x Optical Zoom
- 1080p@30fps / 720p@60fps Resolution
- Latency 170ms

### Blue Shark II

- 81° AOV (In Water)
- 10 x Optical Zoom
- 1080p@60fps Resolution
- Latency 130ms

## IP MillieOne Range Cameras



### Goblin<sup>M</sup>

- 100°, 113° & 142° AOV (Dome Port)
- 76°, 87° & 110° AOV (Flat Port)
- 1080p@60fps Resolution
- Latency 150ms
- 24VDC (10VDC-36VDC) 5W

### Blue<sup>M</sup>

- 81° AOV (In Water)
- 10 x Optical Zoom
- 1080p@60fps Resolution
- Latency 150ms
- 24 VDC (10VDC-36VDC) 10W or PoE

### Orca<sup>M</sup>

- 71° AOV
- 30 x Optical Zoom
- 1080p@60fps Resolution
- Latency 150ms
- 24 VDC (10VDC-36VDC) 10W or PoE

## Low Light Monochrome IP Cameras



### Night Shark IP

- 130° AOV (options available)
- Sensitivity: 0.0001 Lux
- 1080p@30fps / 720p@60 Resolution
- Latency 170ms / 140ms
- Power: 24V DC, 5W or PoE

### IM13-136 / 137 IP

- 95° AOV
- Sensitivity: 76 microlux (300TVL limit)
- 25 or 30fps
- 800 TVL
- Power: 16-24V DC, 700mA (900mA Inrush)

## 4K IP Camera



### Megalodon 4K IP

- Video Stream Bandwidth 40Mbit/s
- 79° AOV
- 20 x Optical Zoom

# Electric Actuators



## OE10-107 Rotator

- Output torque: 37Nm (speed dependant)
- Output speed: 13 – 30 degrees / second
- Position Feedback: 8 bit serial  $\pm 2^\circ$  accuracy (GoTo Positions)
- Power: 24V DC, 2.8A (max)
- Control: RS232 or RS485
- Software and Mechanical End Stops
- 6000 msw Rated

## OE10-104 Pan & Tilt

- In addition to the OE10-107 Specification
- Positive Pressure Compensator
- Error Feedback:
  - Oil Level Indicator
  - Water Ingress
  - Over Temperature
  - Over Current Sensor
  - Stall Error



# Introducing the MillieOne series

## Intelligent cameras for the ocean industries



Orca<sup>™</sup>



Blue<sup>™</sup>



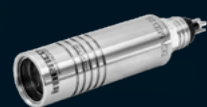
Goblin<sup>™</sup>



Scan QR codes for product pages

- ▀ The MillieOne is built on Subvis - a trusted and tested technology
  - ▀ Backward compatible upgrades available to Orca Subvis
  - ▀ Advanced and reliable cameras for the subsea industry
  - ▀ A market leading platform with AI functionalities
    - ▀ Integration of customer applications
    - ▀ New streaming formats
    - ▀ NDAA Compliant

## Subsea Lighting 24Vdc



### SeaLED 25

- 1,000 Lumen
- 40° or 70° AOV i/w
- 3200K
- Dimming: 0-10V
- 24V @11W

### OE11-153

- 1,700 Lumen
- 88° in water
- 5000K
- No Dimming
- 24V @25W

### OE11-152

- 1,700 Lumen
- 90° in water
- 6500K
- Dimming: 0-10V
- 18-30V @25.4W



### IM11-156

- 2,460 Lumen
- 80° in water
- 6500K nominal
- Dimming: 0-10V
- 18-30V @54W

### SeaLED 135

- 5,300 or 8,000 Lumen
- 95° in water
- 5000K
- Dimming:
  - RS232
  - RS485
  - Optional 0-10V

### OE11-301

- 10,000 Lumen
- 90° in water
- 5700K
- Dimming:
  - RS232
  - RS485
  - Optional 0-10V

## Subsea Lighting 110Vac



### OE11-201

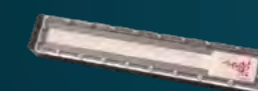
- 4,800 Lumen
- 100° in water
- 5000K
- Dimming: 0-10V
- 110-240Vac @45W

### SeaLED 135 (110V)

- 10,000 Lumen
- 95° in water
- 4000K
- Dimming:
  - Triac
  - RS232,RS485
  - Optional 0-10V

### IM11-350

- 10,000 Lumen
- 90° in water
- 5700K
- Dimming:
  - Triac
  - RS232,RS485
  - Optional 0-10V



### SeaLED 300

- 15,000 Lumen
- 40° or 80° in water
- 3200K
- Dimming:
  - Triac
  - RS232,RS485
  - Optional 0-10V

### SeaLED300L

- 15,000 Lumen
- 40° or 80° in water
- 3200K
- Dimming:
  - Triac
  - RS232,RS485
  - Optional 0-10V

## Lasers



### Pygmy Shark

- Green Line Laser
- Optical Power 60mw
- Fan Angle: 45° in water
- 24V
- Dot Option Available

### Angel Shark III

- Green Line Laser
- Optical Power 193mw
- Fan Angle: 45° in water
- 24V

# Multiplexers



## Icon Mux 1 & 2

- Fibre to 2 x Ethernet or 1 x Ethernet & 2 x RS232
- Single mode fibre, Bi-Directional (BiDi)
- Ethernet 100BASE-TX / 1000BASE-T
- RS232 option (Control Lighting Via Smart View)



## Icon Mux 117-4

- Single mode fibre, CWDM
- 3 x Ethernet 10/100/1000MB
- 3 x 3G HD-SDI W/RS232 for camera control
- 1 x RS232
- Earth failure monitoring

# Interfacing - Ethernet



## IM20-100 Ethernet Extender System

- 10/100Base T Ethernet
- Up to 2 Subsea Ethernet Devices
- Maximum cable length: 800 Meters
- Power: 24V DC



## IM21-100 Compact Ethernet Hub

- 10/100/1000Base T Ethernet
- Up to 4 Subsea Ethernet Devices
- Maximum cable length: 90 Meters
- Power: 24V DC

# Interfacing - Power



## OE1234

- 90 to 264 VAC Input
- 24VDC Output @4.3A
- RS232, RS485 & USB Interface
- Freestanding



## IIM12-104

- 100-240V AC Input
- 24VDC Output @3.75A
- Protection:
  - Short circuit,
  - Over current

# Our Locations



**USA**  
[SEcamera.sales.us@imenco.com](mailto:SEcamera.sales.us@imenco.com)

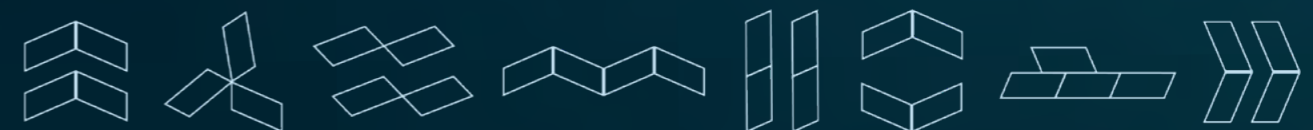
**UK & Global**  
[SEcamera.sales.uk@imenco.com](mailto:SEcamera.sales.uk@imenco.com)

**Norway & Europe**  
[SEcamera.sales.eu@imenco.com](mailto:SEcamera.sales.eu@imenco.com)

**Imenco LLC**  
 101 Oil Patch Rd, Broussard LA  
 70518  
 USA

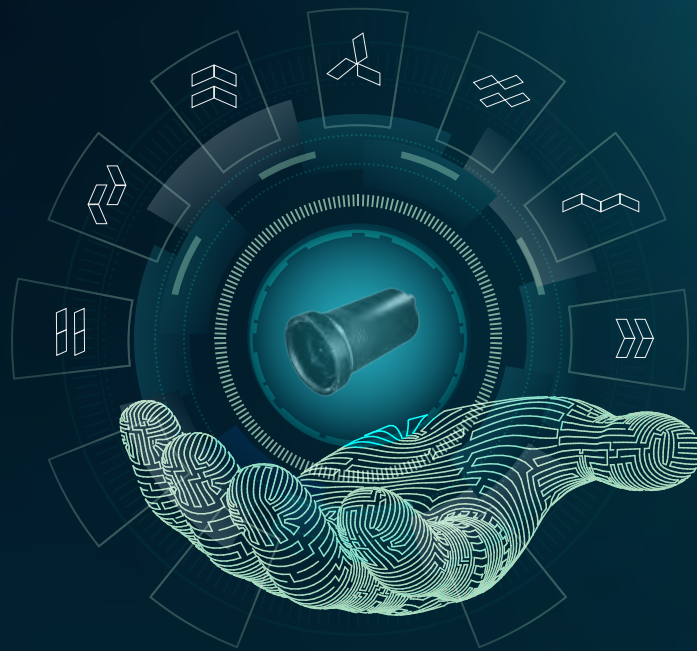
**Imenco UK Ltd**  
 Campus 1  
 Aberdeen Innovation Park  
 Balgownie Road, Bridge of Don  
 Aberdeen, AB22 8GT  
 United Kingdom

**Imenco Future Technologies AS**  
 Kophaug 3  
 5570 Akksdal  
 Norway





To find out more scan the QR code



**imenco**

FUTURE TECHNOLOGIES

[future-technologies.no](http://future-technologies.no)