

Marine & Naval Visual Surveillance Systems

Innovative **Solutions**,
Infinite Possibilities.



Defence



Renewable energy



Aquaculture



Marine



Industrial



Oil & gas



Future technologies



Naval Range



DHOSS Dual Sensor MIL PTZ Camera

- Ultra low light
- Colour/Thermal
- 36x Optical Zoom
- 640 x 480 thermal sensor



ODIN - External Compact Naval PTZ Camera

- Remotely Controlled Pan, Tilt & Zoom
- 4MP STARVIS CMOS sensor
- Ultra PoE (PoE++)
- Stainless Steel 316 painted



DHOSS Fixed Ultra Low Light Zoom Camera

- 36x Zoom HD Visible Sensor
- Ultra Low Light Mono Mode
- Suitable for extreme weather
- Demisting Window Heater



External Marine Fixed Mil version

- 5MP, Day/Night
- PoE Plus
- Stainless steel 316
- Window Hydrophilic Film option



Rugged Fixed Camera

- 5MP, Day/Night
- Power over Ethernet
- Anodized aluminium
- US Mil Spec Design



Rugged Thermal Camera

- High resolution LWIR
- Power over Ethernet
- Designed to U.S Mil Specification
- Marine Options



External Fixed Marine Camera c/w Wiper

- High definition
- Sony STARVIS sensor
- 316 Stainless steel
- Rugged, heated enclosure, integrated wiper

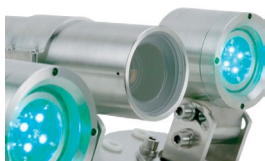


Internal Fixed Dome Camera

- 5 Megapixel, Day/Night
- Build in IR LED illuminators & Audio Mic
- Power over Ethernet
- Robust IP66/IK10



Submarine Surveillance Systems



Cameras & Lamps

- Ultra Low Light mono subsea cameras
- HD/SD colour subsea cameras
- Subsea LED lamps
- Inboard CCTV systems



On Board Monitoring

- Video Management Software solutions
- Bespoke control/viewing
- Solid State Digital recording
- Video IP streaming



Subsea Monochrome Camera

- HDTV 1080p Ethernet Camera
- Excellent Low Light Performance; 0.0001 Lux
- Varifocal Lens with up to 71° HFOV
- Wide Operating Temperature range

Marine Range



Marine Dual Sensor PTZ Camera

- Remotely Controlled Pan, Tilt & Zoom
- 4MP STARVIS CMOS visible sensor
- Uncooled LWIR Thermal sensor
- Smart IR Illuminator option



NJORD - External Compact DNV PTZ Camera

- Remotely Controlled Pan, Tilt & Zoom
- 4MP STARVIS CMOS sensor
- Stainless Steel 316
- Smart IR Illuminator option



LOKI - External Compact Marine PTZ Camera

- Remotely Controlled Pan, Tilt & Zoom
- 4MP STARVIS CMOS sensor
- Marine Aluminium
- Smart IR Illuminator option



External Marine Fixed DNV Camera

- 5MP, Day/Night, IR illuminators
- Window heater option
- Window Hydrophilic Film option
- Remote varifocal lens



Internal 360°/180° Fixed Camera

- 12 Megapixel CMOS sensor
- 180° Panoramic view
- 360° Surround view
- ePTZ – No Moving Parts



SKULD – External Marine 360°/180° Camera

- 12 Megapixel CMOS sensor
- 180° Panoramic view
- 360° Surround view
- 316L Stainless Steel Housing



Internal PTZ Dome Camera

- Remotely controllable 5MP, Pan, Tilt & Zoom CMOS camera
- 30x Optical Zoom
- Smart IR Illuminators
- Ultra POE (PoE++) or 24Vac



Internal Fixed Dome Camera

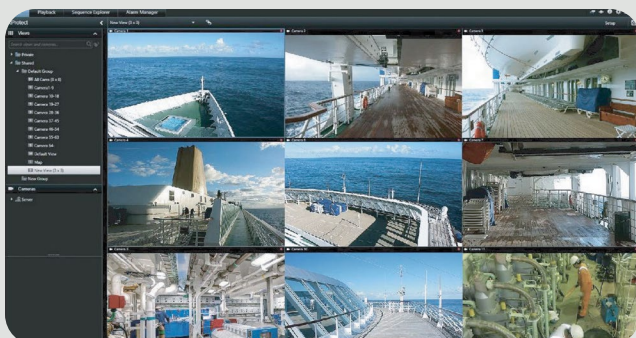
- 5MP, Day/Night, IR Illuminator
- Power over Ethernet
- Commercial & Naval options



Wash System for External Cameras

- DNV Type Approved
- Stainless Steel 316
- 10 Litre reservoir
- EX Certified option

Smart Applications



VMS Client



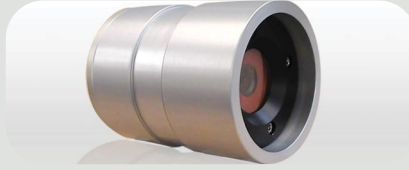
Ship to Shore Streaming

Special Application Range



Overhead Line Equipment System

- High resolution 64MP Stills
- LED illuminators
- Automated wire measurement
- Up to 8hr charge & 30m wireless range



Rugged Mining Camera

- HD & GigE options
- Low light option
- High shock
- High vibration resistance



Anchor Bolster Monitoring System

- Confirms anchor orientation underwater
- Successfully installed on numerous Semi-Submersible Rigs worldwide



On Deck BOP Inspection System

- 4MP Camera
- 30x optical / 16x digital zoom
- Integrated GUI Pelicase
- Rugged Deployment frame



Full Subsea Camera and Lamp Range

- Cameras/lights for ROV Inspection
- HD/SD/low-light
- Halogen & LED
- Full ocean depth Solutions



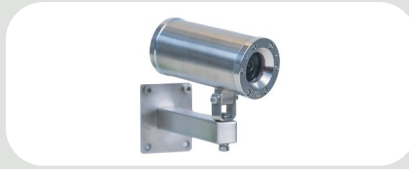
External Marine PTZ Dome Camera - Ex Certified

- 1080P High Definition
- 2 Megapixel CMOS day/night sensor
- 20x optical zoom
- ATEX, IEECEX



External Marine Fixed Camera – Ex Certified 5MP

- ATEX, IECEx
- IP68 Stainless Steel
- 5MP day/night sensor
- Motorized varifocal lens



External Marine Fixed Camera - Ex Certified

- 4 Megapixel CMOS day/night sensor
- Varifocal 4.1-9mm motorized lens
- Smart IR, (PoE++)
- ATEX, IECEx & EAC-EX



Internal Safety Monitoring Thermal Camera

- Continuous safety monitoring
- Temperature alarm output
- LWIR thermal & visible sensors
- Compact IP66 housing

Record, Control & Monitoring



Operator Station

- Multi monitor viewing options Console, Wall or Desk options
- Type approved for bridge use
- PTZ Joystick



Server + Network Switch

- Pre-configured VMS
- High performance RAID storage
- Up to 31 days recording to suit system
- Network Switch options



Central Rack

- Rugged Rack Cabinet
- 9U, 24U or 42U
- Shock Mount option
- Network switch and UPS options

Smart Analytics



Get in touch

Imenco design, develop and manufacture topside camera systems as well as subsea cameras, lights & lasers. More than 45 years of experience gives our customers added value and smart solutions.

Imenco provides digital marine IP CCTV systems to meet the harshest of environments. Our equipment is recommended for vessels requiring a rugged, commercial-off-the-shelf surveillance monitoring, control & recording, marine CCTV system designed to meet the safety and reliability requirements for a wide variety of commercial, coastguard and naval vessels. In addition to our regional offices, we have a worldwide network of approved agents who can provide you with both local sales and project support. Please contact us and we can advise of your local Imenco representative.



UK Office

Imenco UK Ltd
Campus 1,
AB22 8GT, UK
+ 44 1224 226 500
systems.uk@imenco.com

US - East (Sales)

Imenco LLC
1993 Moreland Parkway, Suite
204, Annapolis, MD 21401 USA
+ 1 443 949 9177
nelson.gardner@imenco.com
cindy.shock@imenco.com

US - Office (Support)

Imenco LLC
101 Oil Patch Rd, Broussard
LA 70518, USA
+1 985 518 2645
US@imenco.com

Norway Head Office

Imenco AS
Kophaug 3,
5570 Aksdal, Norway
+47 52 86 41 00
imenco@imenco.com