

An aerial photograph of a naval fleet at sea. The central focus is a large amphibious transport dock (LPD) with its deck visible. It is flanked by two smaller ships, likely frigates or destroyers, one in front and one behind. The ships are moving in a line, leaving a white wake on the dark blue water. The sky is overcast with grey clouds.

**imenco**

FUTURE TECHNOLOGIES

## Marine & Naval Visual Surveillance Systems



# Naval Range



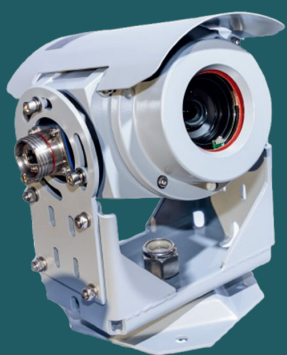
## DHOSS Dual Sensor MIL PTZ Camera

- Ultra Low Light
- Colour/Thermal
- 36x Optical Zoom
- 640 x 480 Thermal Sensor



## ODIN - External Compact Naval PTZ Camera

- Remotely Controlled Pan, Tilt & Zoom
- 4MP STARVIS CMOS sensor
- Ultra PoE (PoE ++)
- Stainless Steel 316 painted



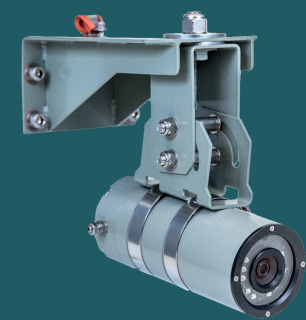
## DHOSS Fixed Ultra Low Light Zoom Camera

- 36x Zoom HD Visible Sensor
- Ultra Low Light Mono Mode
- Suitable for Extreme Weather Conditions
- Demisting Window Heater



## External Marine Fixed MIL Version

- 5MP, Day/Night
- PoE Plus
- Stainless Steel 316 Painted
- Window Hydrophilic Film Option



## Rugged Fixed Camera

- 5MP, Day/Night
- PoE
- Anodised Aluminium
- Designed to US MIL Spec



## Rugged Thermal Camera

- High Resolution LWIR
- PoE +
- Designed to US MIL Spec
- Marine Options



## Internal Fixed Dome Camera

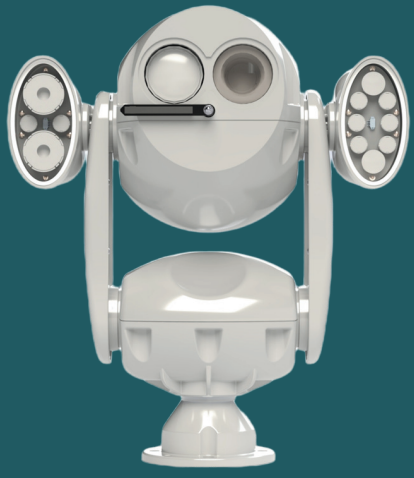
- 5 Megapixel, Day/Night
- Built in IR LED Illuminators & Audio Mic
- PoE
- Robust IP66/IK10



## External Fixed Marine Camera c/w Wiper

- High Definition
- Sony STARVIS Sensor
- 316 Stainless Steel
- Rugged, Heated Enclosure, Integrated Wiper

# Marine Range



## Marine Dual Sensor PTZ Camera

- Remotely Controlled Pan, Tilt & Zoom
- 4MP STARVIS CMOS Visible Sensor
- Uncooled LWIR Thermal Sensor
- Smart IR Illuminator Option

## Stainless Steel Dual Sensor PTZ Camera

- 40x Zoom 4k Visible Sensor
- Ultra Low Light Mono Mode
- Uncooled LWIR Thermal Sensor
- Stainless Steel Housing

## NJORD - External Compact DNV PTZ Camera

- Remotely Controlled Pan, Tilt & Zoom
- 4MP STARVIS CMOS Visible Sensor
- Stainless Steel 316
- Smart IR Illuminator Option



## LOKI- External Compact Marine PTZ Camera

- Remotely Controlled Pan, Tilt & Zoom
- 4MP STARVIS CMOS Visible Sensor
- Marine Aluminium
- Smart IR Illuminator Option

## External Marine Fixed DNV Camera

- 5MP, Day/Night, IR Illuminators
- Window Heater Option
- Window Hydrophilic Film Option
- Remote Varifocal Lens

## SKULD - External Marine 360°/180° Camera

- 12MP CMOS Sensor
- 180° Panoramic View
- 360° Surround View
- Stainless Steel 316 Housing



## Internal 360° /180° Fixed Camera

- 12MP CMOS Sensor
- 180° Panoramic View
- 360° Surround View
- ePTZ - No Moving Parts

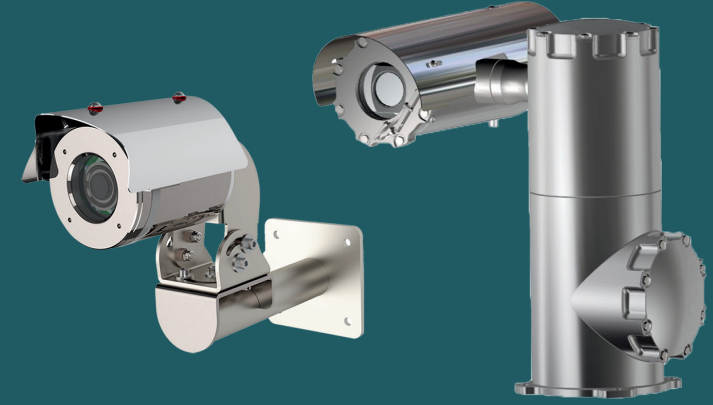
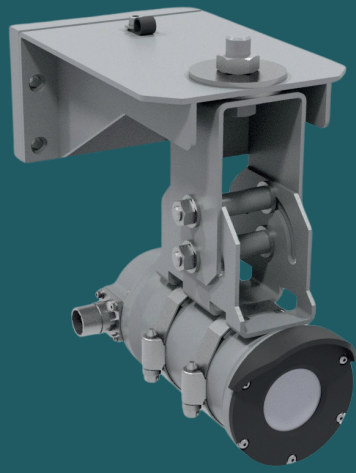
## Internal PTZ Dome Camera

- 5MP > High Definition
- Smart IR Illuminators
- 30x Optical Zoom / 8x digital zoom
- PoE++

## Internal Fixed Dome Camera

- 5MP WDR Day/Night Sensor
- PoE
- Built in IR LED Illuminators
- Robust IP66 / IK10 Rated Housing

# Special Application Range

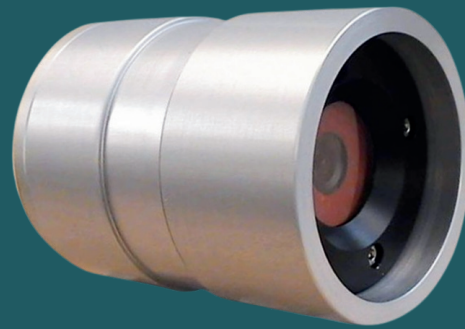


## Internal Safety Monitoring Thermal Camera

- Continuous Safety Monitoring
- Temperature Alarm Output
- LWIR Thermal & Visible Sensors
- Compact IP66 Housing

## Explosion Proof Range

- PTZ, Dome, Fixed, 360°
- High Definition, 5 Mega Pixels
- ATEX
- IP68, Stainless Steel



## Offshore Camera Solutions

- Anchor Bolster Monitoring System
- On Deck BOP Inspection System

## Rugged Mining Camera

- HD & GigE Options
- Low Light Options
- High Shock
- High Vibration Resistance

## Overhead Line Equipment System

- High Resolution 64 MP Stills
- LED Illuminators
- Automated Wire Measurement
- Up to 8hr Charge & 30m Wireless Range

# Accessories



## Wash System for External Cameras

- DNV type Approved
- Stainless Steel 316
- 10 Litre Reservoir
- EX Certified Option

## Operator Station

- Multi Monitor Viewing Options (Console, Wall or Desk) Use
- Type Approved for Bridge
- PTZ Joystick

## Server + Network Switch

- Pre-configured VMS
- High Performance RAID Storage
- Up to 31 Days Recording to Suit System

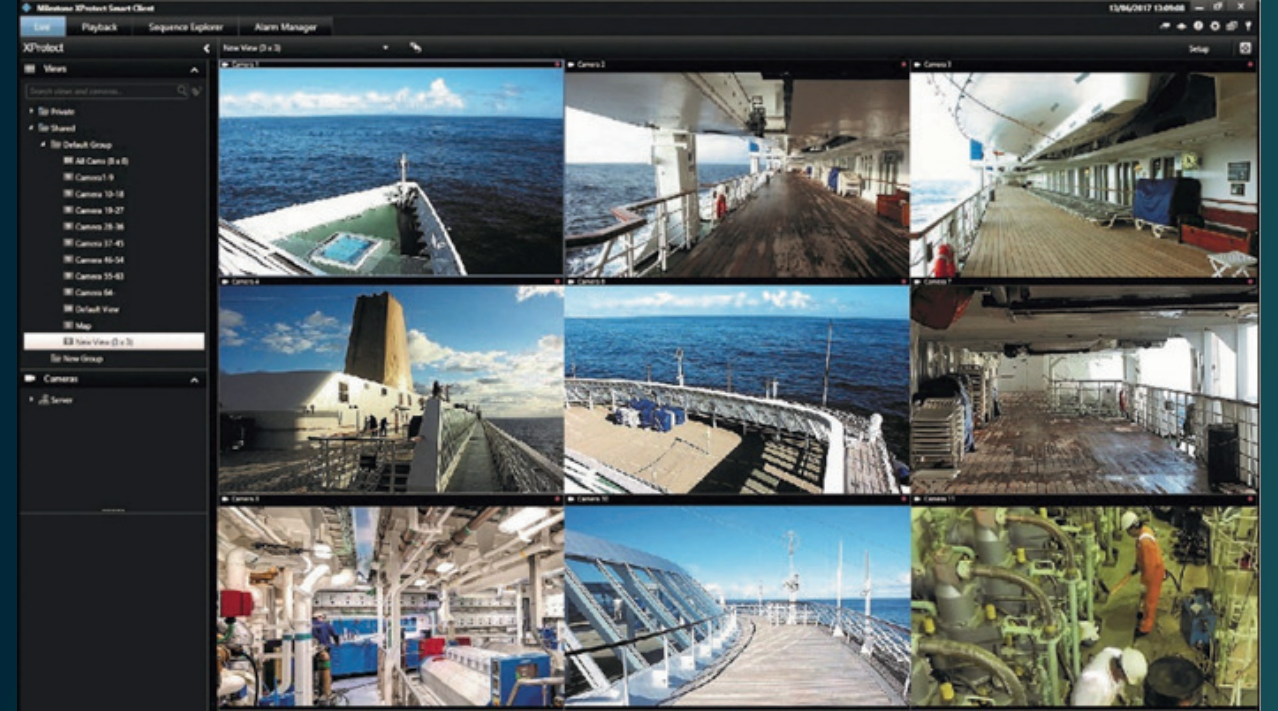
## Central Rack

- Rugged Rack Cabinet
- 9U, 24U or 42U
- Shock Mount Option
- Network Switch and UPS Options

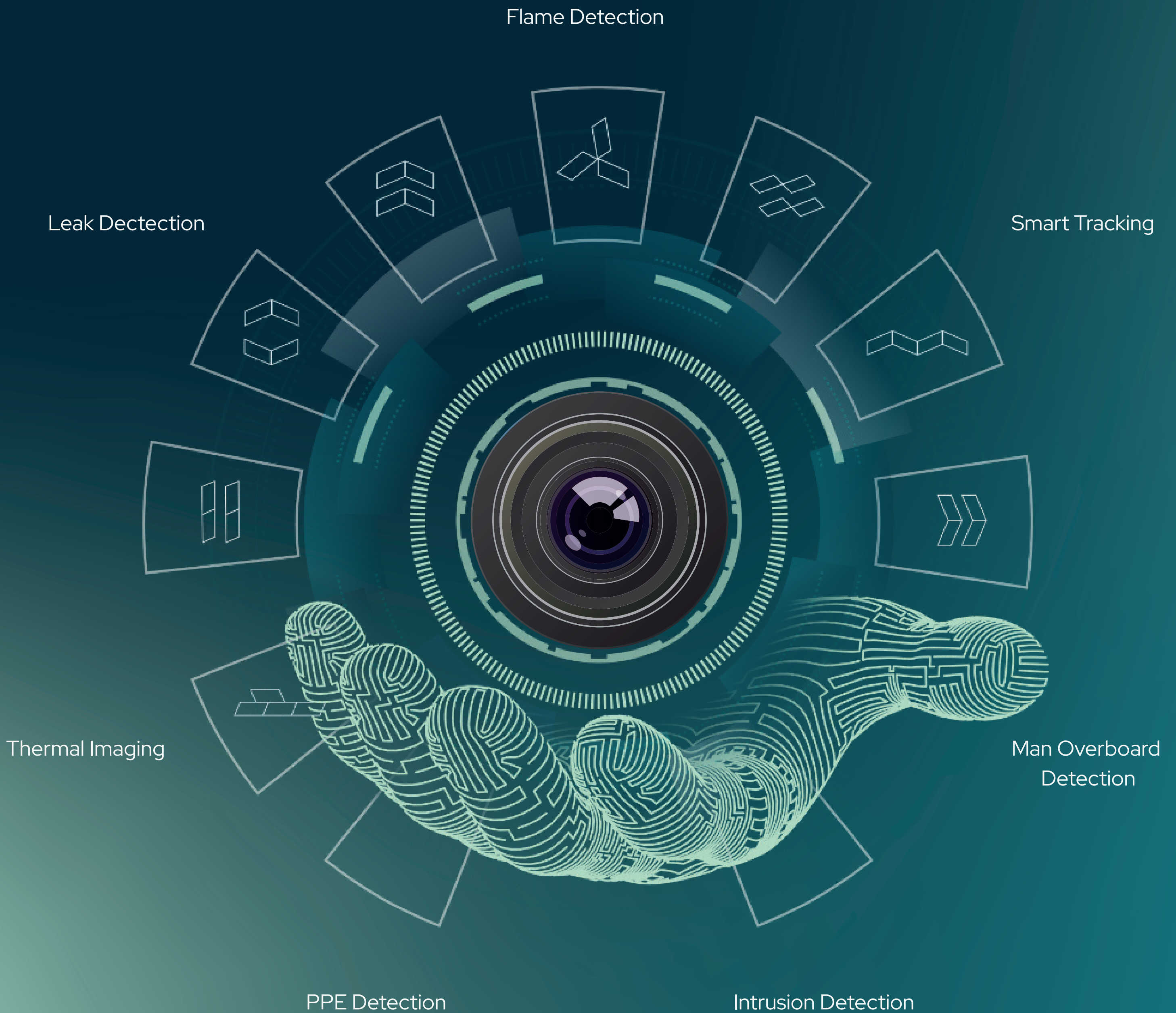
# Smart Applications

## Video Management Software Client (VMS) Client

- Powerful & Flexible Video Management Software (VMS)
- Instant Access to Live & Recorded Streams
- Customisable Camera Views
- Interactive Smart Ship Map Function
- Advanced Multi-Screen Handling



# Smart Analytics



Flame Detection

Leak Detection

Smart Tracking

Thermal Imaging

Man Overboard Detection

PPE Detection

Intrusion Detection

# Contact Us

Imenco have more than 50 years experience in the design, development & manufacturing of visual surveillance equipment for surface & subsea solutions.

Imenco provides digital Marine & Naval IP CCTV systems to withstand the harshest of environments. Our equipment is recommended for vessels requiring rugged surveillance cameras with control & recording designed to meet the safety & reliability requirements for a wide variety of commercial, coastguard & naval vessels.

Our equipment is ONVIF & NDAA compliant & where applicable, meeting marine type-approved & MIL-Spec certification.

In addition to our regional offices, we have a worldwide network of approved agents who can provide you with local sales & project support.

● Imenco Offices

● Imenco Agents



## UK Office

Imenco UK Ltd  
Campus 1, Aberdeen  
AB22 8GT, UK  
CCTVcamera.sales@imenco.com  
+44 1224 226500

## US Office - Gulf Coast Sales

Imenco LLC  
101 Oil Patch Road  
Broussard, LA 70518, USA  
CCTVcamera.sales.US@imenco.com  
+1 985 518 2645

## US Office - East Coast Sales

Imenco LLC  
1993 Moreland Parkway  
Annapolis, MD 21401, USA  
CCTVcamera.sales.US@imenco.com  
+1 443 949 9177

## Norway Office

Imenco AS  
Kophaug 3  
5570 Aksdal, Norway  
ift.norway@imenco.com  
+47 52 86 41 00